

Virtual AskQC Office Hours

411 on FAST:

The what, why, and how of **F**aceted **A**pplication of **S**ubject **T**erminology

OCLC Metadata Quality
October 2022

Housekeeping

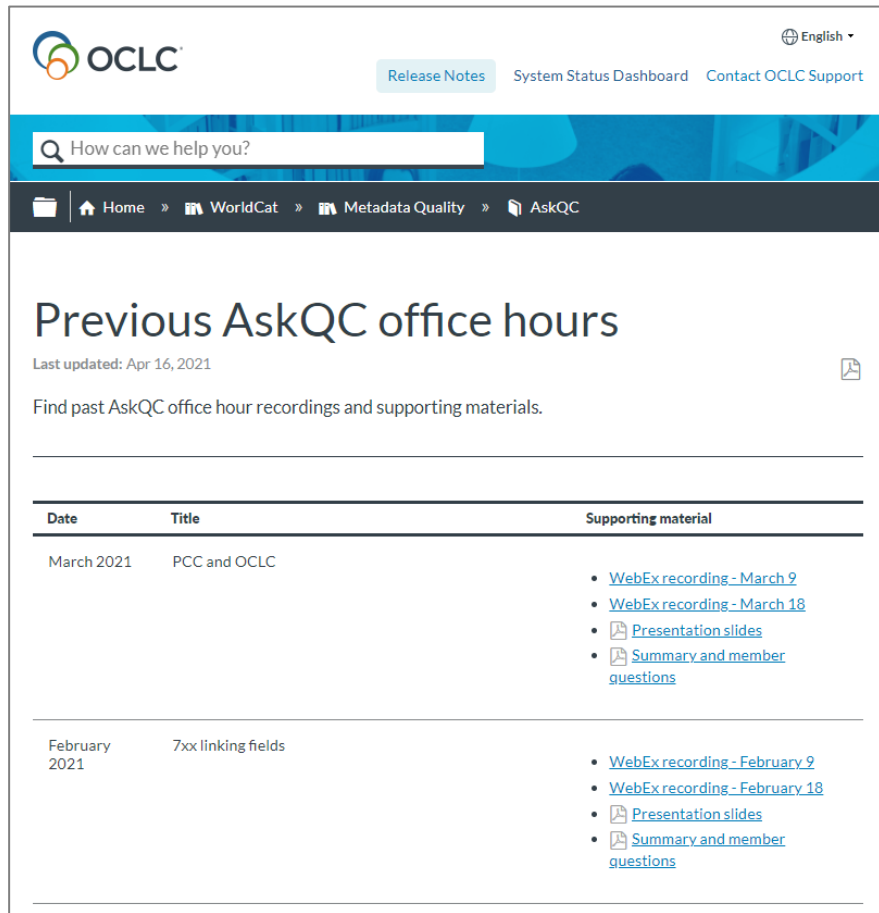
This session is being recorded



Housekeeping

This session is being recorded

All session recordings, slides, and notes are available at oc.lc/askqc



The screenshot shows the OCLC website interface. At the top, there is the OCLC logo, a language selector set to 'English', and navigation links for 'Release Notes', 'System Status Dashboard', and 'Contact OCLC Support'. A search bar contains the text 'How can we help you?'. Below the search bar is a breadcrumb trail: Home » WorldCat » Metadata Quality » AskQC. The main content area is titled 'Previous AskQC office hours' and includes a 'Last updated: Apr 16, 2021' timestamp and a download icon. A sub-header reads 'Find past AskQC office hour recordings and supporting materials.' Below this is a table with three columns: 'Date', 'Title', and 'Supporting material'. The table lists two office hours: one for March 2021 (PCC and OCLC) and one for February 2021 (7xx linking fields). Each entry has a list of links for recordings, slides, and summary questions.

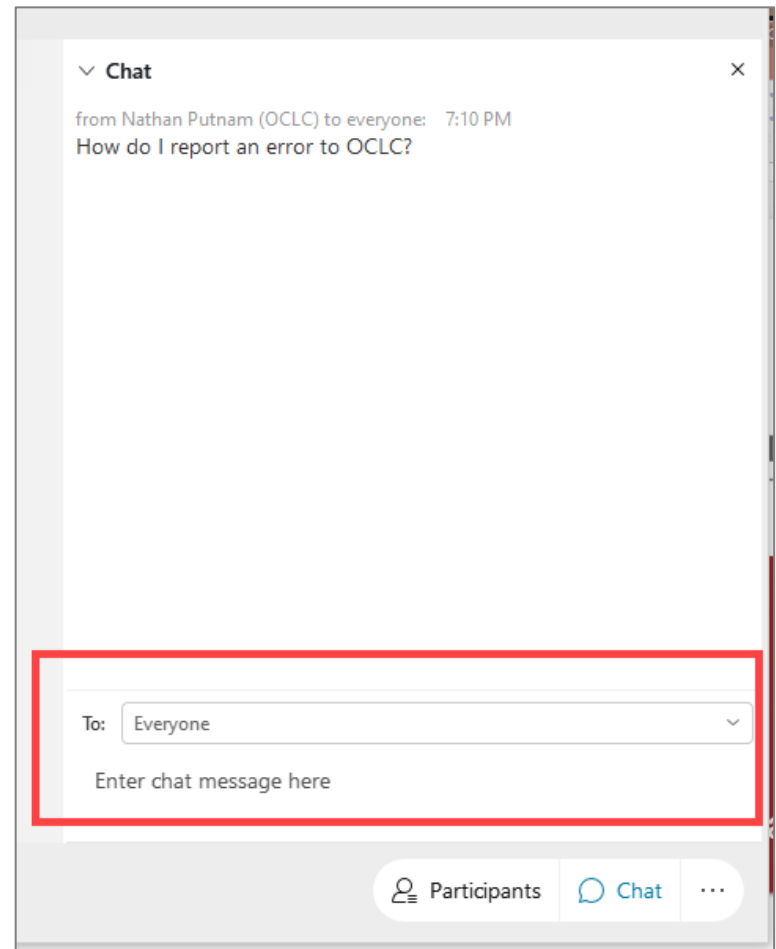
Date	Title	Supporting material
March 2021	PCC and OCLC	<ul style="list-style-type: none">WebEx recording - March 9WebEx recording - March 18Presentation slidesSummary and member questions
February 2021	7xx linking fields	<ul style="list-style-type: none">WebEx recording - February 9WebEx recording - February 18Presentation slidesSummary and member questions

Housekeeping

This session is being recorded

All session recordings, slides, and notes are available at oc.lc/askqc

Enter questions in chat to
“Everyone” at any time during the
presentation



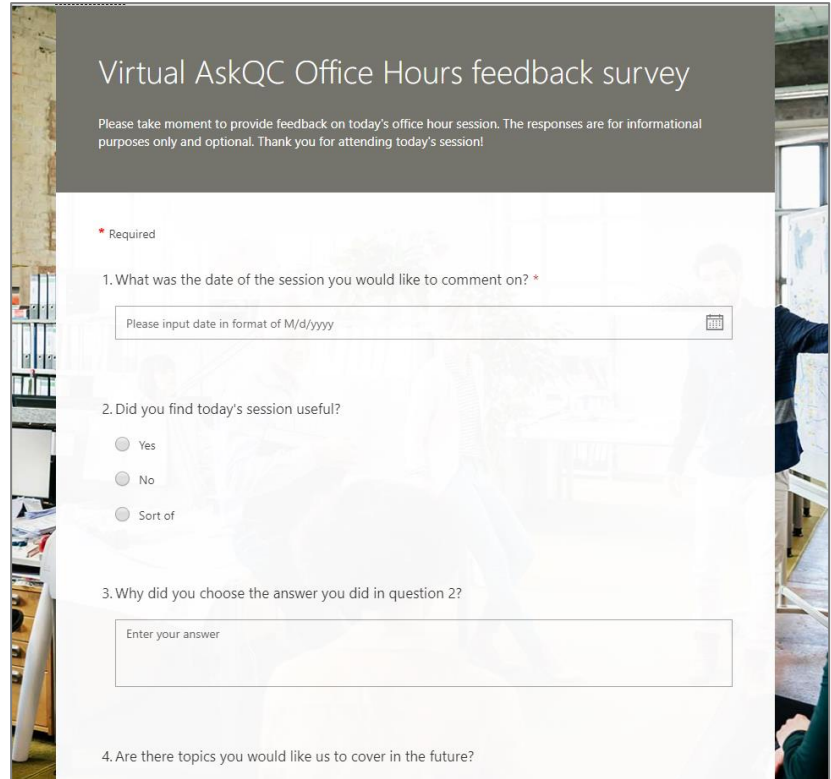
Housekeeping

This session is being recorded

All session recordings, slides, and notes are available at oc.lc/askqc

Enter questions in chat to “Everyone” at any time during the presentation.

After the session, you will be directed to a brief, optional survey



Virtual AskQC Office Hours feedback survey

Please take moment to provide feedback on today's office hour session. The responses are for informational purposes only and optional. Thank you for attending today's session!

* Required

1. What was the date of the session you would like to comment on? *

Please input date in format of M/d/yyyy

2. Did you find today's session useful?

Yes

No

Sort of

3. Why did you choose the answer you did in question 2?

Enter your answer

4. Are there topics you would like us to cover in the future?

On the call today



Charlene Morrison

Data Analyst



Shanna Griffith

Data Analyst



Cynthia Whitacre

Senior Metadata
Operations Manager



Bryan Baldus

Senior Data Analyst

Kerre Kammerer

Lead Software Engineer

411 on FAST: The what, why, and how of Faceted Application of Subject Terminology

Cynthia Whitacre
Senior Metadata Operations Manager

Shanna Griffith
Data Analyst

Important Links

FAST Overview page: <https://www.oclc.org/en/fast.html>

FAST Quick Start Guide:

<https://www.oclc.org/content/dam/oclc/fast/FAST-quick-start-guide-2022.pdf>

This guide is an 18-page document on which we've based this presentation. Kerre Kammerer was one of the authors of this guide.

What is FAST?

Faceted **A**pplication of **S**ubject
Terminology

Derived from Library of Congress
Subject Headings (LCSH)

Designed to meet the need for a
general-use subject terminology
scheme.



Photo by [Robin Pierre](#) on [Unsplash](#)

Why use FAST?

- Simple to learn and apply
 - Efficient, intuitive
- Faceted-navigation-friendly
 - Keyword searching
 - Filtering by faceted value

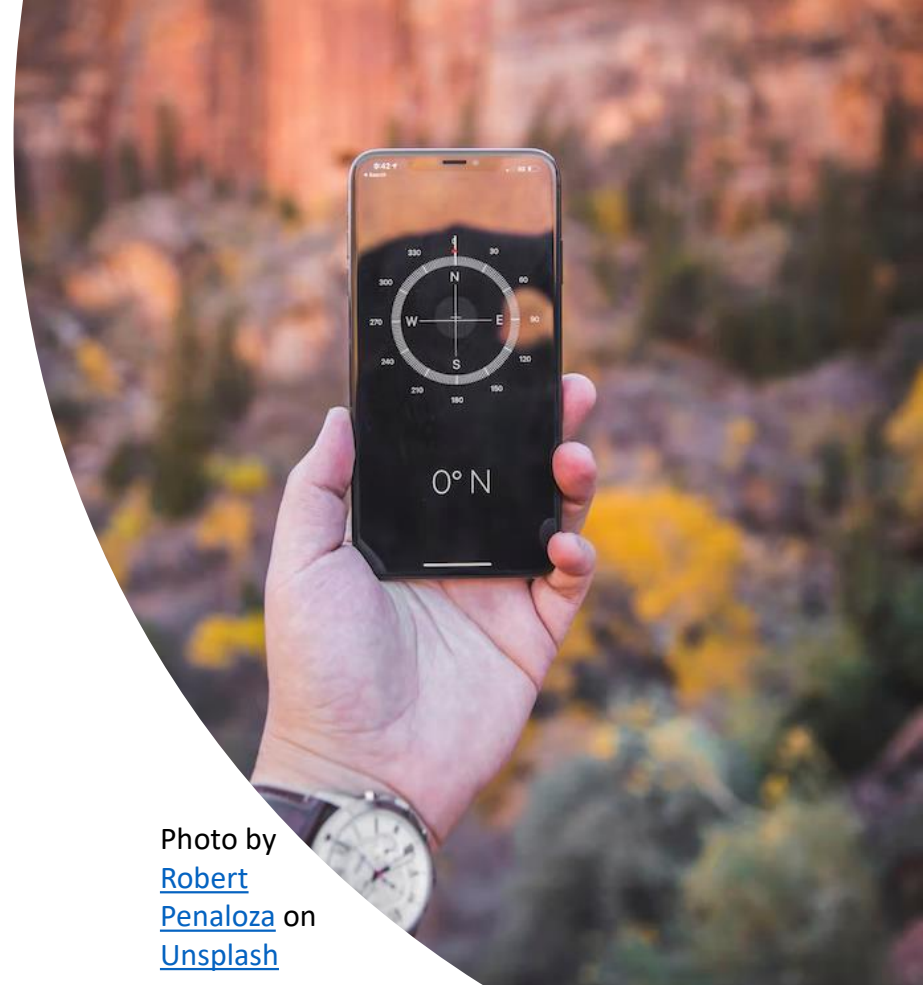
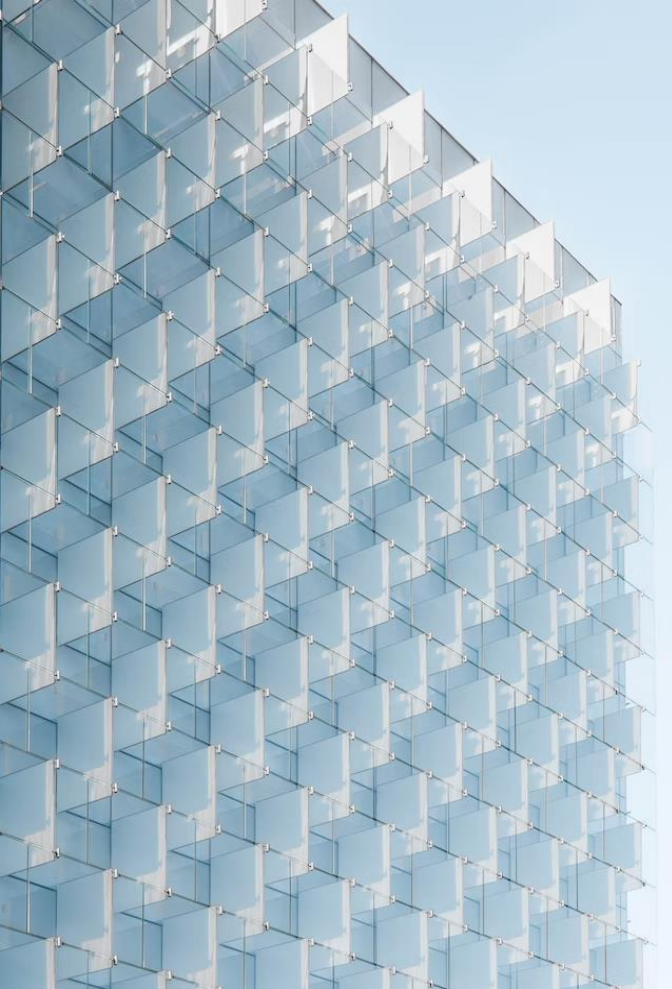


Photo by
[Robert Penaloza](#) on
[Unsplash](#)



Why use FAST?

- Modern in its design
 - Linked Data
- Maintains upward compatibility with LCSH
 - Predictable, consistent
- FAST is free

Photo by [Joel Filipe](#) on [Unsplash](#)

How to Identify a FAST heading in MARC

- 6XX field, second indicator 7, subfield \$2 *fast*
- Examples:
 - **650 7 Social stratification. \$2 fast \$0 (OCoLC)fst01123370**
 - **651 7 United States. \$2 fast \$0 (OCoLC)fst01204155**
 - **655 7 Motets. \$2 fast \$0 (OCoLC)fst01726673**
 - **647 7 Northern War \$d (1700-1721) \$2 fast \$0 (OCoLC)fst01039241**
 - **648 7 2000-2099 \$2 fast**

FAST usage outside MARC

- FAST is used in indexing and abstracting systems
- FAST can be used in BIBFRAME
- FAST can be used in Dublin Core
- FAST can be used in MODS

Photo by
[Joel Holland](#)
on
[Unsplash](#)



Retain or Delete FAST from MARC copy?

DELETE in local copy:

- Perception that FAST is redundant to LCSH
- Perception that FAST clutters the display

RETAIN in local copy:

- If you don't wish to display FAST in your public catalog, configure your system to suppress public display.
- That allows for future use of FAST in your system down the road
- FAST is compatible with LCSH and co-exists well in catalogs that use both

FAST heading sources

Derived from four sources:

- Established headings contained in the Library of Congress Subject Heading (LCSH) authority file
- Name headings established in Library of Congress/NACO Authority File (LCNAF) and used as subject headings in WorldCat
- Subject headings created based on LCSH rules and used in WorldCat
- Genre/form headings based on Library of Congress Genre/Form Terms (LCGFT)

Key differences: FAST versus LCSH

FAST	LCSH
9 facets	6 categories
One facet per heading	Allows multiple categories within a single heading
Consolidation of duplicate subject headings by facet within the bibliographic record 650 7 Dogs ‡2 fast 651 7 Canada ‡2 fast 651 7 United States ‡2 fast	Repetition of subject headings from one category, when combined with a different category, may occur within a bibliographic record 650 0 Dogs ‡z Canada 650 0 Dogs ‡z United States
FAST is a fully enumerated scheme, with a cross reference structure, where all concepts are explicitly established, and each concept has its own URI	Subset of permitted headings is found in LCSH, which has its own cross reference structure. Complex rules for constructing headings not found in LCSH.

Structure of FAST headings

Consists of nine distinct facets (categories):

- Personal Names (field 600)
- Corporate Names (field 610)
- Meetings (field 611)
- Uniform Titles (field 630)
- Named Events (field 647)
- Chronological (field 648)
- Topical (field 650)
- Geographic (field 651)
- Form/Genre (field 655)



Faceting LCSH into FAST

LCSH heading

651 0 United States †x History †y Revolution, 1775-1783 †x Participation, French.

FAST headings

651 7 United States †2 fast †0 (OCoLC)fst01204155

650 7 Military participation †x French. †2 fast †0 (OCoLC)fst01353722

647 7 American Revolution †c (United States : †d 1775-1783). †2 fast †0 (OCoLC)fst01351668

648 7 1775-1783. †2 fast

655 7 History. †2 fast †0 (OCoLC)fst01411628

Personal Names (field 600)

- Constructed from the same descriptive subfields as personal name headings in LCSH (‡a, ‡q, ‡b, ‡c, and ‡d)
- LCSH personal name headings combined with terms from other facets are found in their corresponding FAST facet

FAST headings

600 17 King, Martin Luther, ‡c Jr., ‡d 1929-1968 ‡2 fast ‡0 (OCoLC)fst00040023

650 7 Assassination. ‡2 fast ‡0 (OCoLC)fst00818962

655 7 Fiction. ‡2 fast ‡0 (OCoLC)fst01423787

LCSH heading

600 10 King, Martin Luther, ‡c Jr., ‡d 1929-1968 ‡x Assassination ‡v Fiction.

Corporate Names (field 610)

- Constructed from the same descriptive subfields as corporate name headings in LCSH (‡a and ‡b)
- LCSH corporate name headings combined with terms from other facets are found in their corresponding FAST facet

FAST headings

610 27 Ohio State Buckeyes (Football team) ‡2 fast ‡0 (OCoLC)fst00573616

655 7 Sources. ‡2 fast ‡0 (OCoLC)fst01423900

LCSH heading

610 20 Ohio State Buckeyes (Football team) ‡v Sources.

Meeting (field 611)

- Derived from headings established as meeting names in the LCNAF and used as a subject in WorldCat

FAST headings

611 27 World Conference on Women. †2
fast †0 (OCoLC)fst01408640

611 27 Asia-Europe Meeting. †2 fast †0
(OCoLC)fst01408985

655 7 Pictorial works. †2 fast †0
(OCoLC)fst01423874

LCSH headings

611 20 World Conference on Women †n
(4th : †d 1995 : †c Beijing, China)

611 20 Asia-Europe Meeting †n (11th : †d
2016 : †c Ulaanbaatar, Mongolia) †v
Pictorial works.

Uniform Titles (field 630)

- Constructed either from uniform title headings in the LCNAF or from the title subdivision in personal name or corporate name headings and qualified by the author

FAST headings

630 07 Meet the press (Radio program) †2
fast †0 (OCoLC)fst01372990

630 07 Shining (King, Stephen) †2 fast †0
(OCoLC)fst01375530

LCSH headings

630 00 Meet the press (Radio program)

600 10 King, Stephen, †d 1947- †t Shining.

Named Events (field 647)

- Derived from LCSH topical headings, chronological subheadings, and geographic headings
- Typically include military events, natural disasters, and other notable events

FAST headings

647 7 Tokyo Trial †c (Tokyo, Japan : †d 1946-1948) †2 fast †0 (OCoLC)fst01709967

647 7 Peloponnesian War †c (Greece : †d 431-404 B.C.) †2 fast †0 (OCoLC)fst01353967

647 7 George W. Bush's Shoe Incident †c (Iraq : †d 1968) †2 fast †0 (OCoLC)fst01907306

LCSH headings

650 0 Tokyo Trial, Tokyo, Japan, 1946-1948

651 0 Greece †x History †y Peloponnesian War, 431-404 B.C.

600 10 Bush, George W. †q (George Walker), †d 1946-†x Shoe Incident, 2008.

Chronological (field 648)

- Represent the actual time period covered by the resource being described

FAST headings

647 7 World War †d (1939-1945) †2 fast
†0 (OCoLC)fst01180924

648 7 1939-1945 †2 fast

650 7 American literature †2 fast †0
(OCoLC)fst00807113

648 7 1900-1999 †2 fast

LCSH headings

650 0 World War, **1939-1945**

650 0 American literature **†y** 20th century

Topical (field 650)

- Derived from LCSH topical terms (650 \$a) and general subdivisions (\$x)

FAST headings

650 7 Beagle (Dog breed) †x Breeding. †2
fast †0 (OCoLC)fst01766903

651 7 United States. †2 fast †0
(OCoLC)fst01204155

650 7 Armed Forces †x Bands. †2 fast †0
(OCoLC)fst01982063

LCSH headings

650 0 Beagle (Dog breed) †x Breeding.

651 0 United States **†x** Armed Forces †x
Bands.

Geographic (field 651)

- Follow a hierarchical structure based on the MARC Code List for Geographic Areas (GACs)
- Headings contain from 1 to 3 levels, with the first level being the largest geographic designation identified in the GAC list

GAC [f-sa] = South Africa

1st level = South Africa

2nd level = South Africa ‡z Johannesburg

3rd level = South Africa ‡z Johannesburg ‡z Alexandra

Other differences: FAST vs. LCSH geographic headings

FAST	LCSH
Geographic names are in natural order 650 7 Japan ‡z Mount Fuji	Geographic names are sometimes inverted 651 0 Fuji, Mount (Japan)
Geographic names are not abbreviated 651 7 California ‡z Burbank (Los Angeles County)	Rules are established for when to abbreviate and which abbreviations are used. The same geographic location might be abbreviated when used as a main entry, but the subdivision form is not abbreviated. 651 0 Burbank (Los Angeles County, Calif.) or ‡z California ‡z Burbank (Los Angeles County)
Geographic names are always in indirect order 651 7 England ‡z River Tyne	Geographic names may be in direct order or indirect order, depending on their location in the heading 651 0 Tyne, River (England) or ‡z England ‡z Tyne, River
Geographic qualifiers are retained in the established heading 651 7 Korea (South) ‡z Taegu	Geographic qualifiers are dropped from the main entry form 651 0 Taegu (Korea)

Form/Genre (field 655)

- Derived from the LCGFT and from form subdivisions in LCSH

FAST headings

655 7 Historical fiction. †2 fast †0
(OCoLC)fst01726640

655 7 Fiction. †2 fast †0
(OCoLC)fst01423787

LCSH headings

655 7 Historical fiction. †2 lcgft

650 0 Dogs †v Fiction.

Equivalent LCGFT and LCSH concepts

- FAST favors the LCGFT version of the heading

FAST headings

155 Apologetic writings

455 Apologetic works \$w nne

155 Biographies

455 Biography \$w nne

LCGFT headings/LCSH subdivisions

155 Apologetic writings

185 ‡v Apologetic works

155 Biographies

185 ‡v Biography

Important Links

FAST Overview page: <https://www.oclc.org/en/fast.html>

FAST Quick Start Guide:

<https://www.oclc.org/content/dam/oclc/fast/FAST-quick-start-guide-2022.pdf>

This guide is an 18-page document on which we've based this presentation. Kerre Kammerer was one of the authors of this guide.

On the call today



Charlene Morrison

Data Analyst



Shanna Griffith

Data Analyst



Cynthia Whitacre

Senior Metadata
Operations Manager



Bryan Baldus

Senior Data Analyst

Kerre Kammerer

Lead Software Engineer

Thank you!

November Virtual AskQC Office Hours

Data and algorithms and bibs, oh my!

Tuesday, 8 Nov. at 9:00 AM Eastern

Thursday, 17 Nov. at 4:00 PM Eastern

Registration and session links
available at oclc.org/askqc

Send cataloging policy questions at
any time to askqc@oclc.org



Photo by [Eric Rothermel](#) on [Unsplash](#)